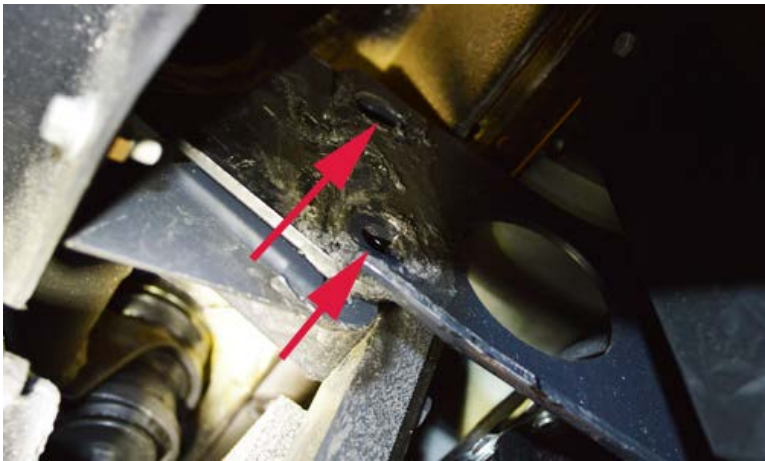


# Mercedes G-Class Rear Mud Flaps Installation Manual 2008-2017

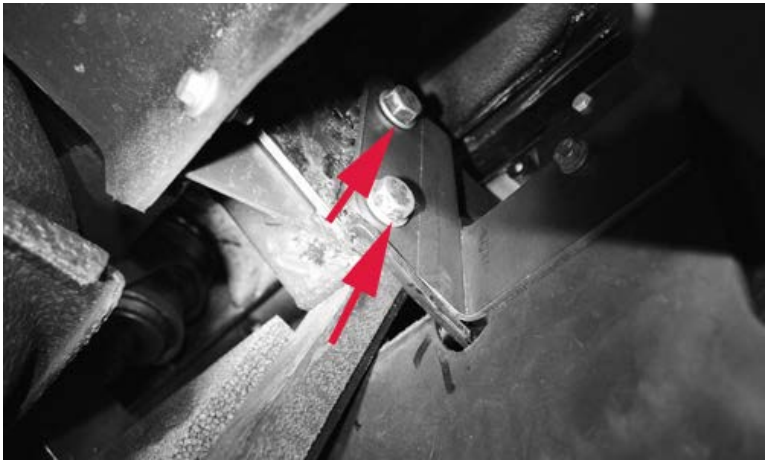


To mount the Mercedes G-Class rear mud flaps, you have to use the existing bumper to body bracket bolts.

Use 17mm socket to remove the two bumper bolts.



Start to work from one side, and do not release bolts from both sides of the bumper to prevent bumper misalignment.



Position the mud flaps inside the bumper bracket, and reinstall the bolts.

Repeat the same with other side.

You are done with installation!



Copyright © 2016 Four by Four Club , Inc All rights reserved. The information and graphics on this Web Site may not be reproduced in any material form or transmitted to any persons without permission from Four by Four Club Inc. under the Copyright Act 1994.